

# **LOOKING TOWARD COLLEGE**

## **MEREDITH COLLEGE**



Selecting A College That's  
Right For You!

Copyright Raychelle Lohmann  
2008

# Agenda

- Ice Breaker
- Choosing A College – Things To Consider
- Types Of Colleges
- What Will Colleges Look For?
- Narrowing Down Your Options
- Confusing Terminology
- What's the Scoop
- Paperwork, Paperwork, Essays, Resumes, And Recommendations
- Other Resources
- What's Next – Your College Planner
- SAT vs. ACT
- Summary



# Things to Consider...

- ★ Distance from home?
- ★ Type?
- ★ Athletics and Activities?
- ★ City or Country?
- ★ Cost/Scholarship/Financial Aid?
- ★ Programs of Study?
- ★ Student Population?
- ★ Family Alum?
- ★ Your Gut Feeling.



# Types of Colleges

- **Public vs. private**

On the one hand, public colleges are usually less expensive, particularly for in-state residents. They get most of their money from the state or local government. Private colleges rely on tuition, fees, endowments, and other private sources. On the other hand, private colleges are usually smaller and can offer more personalized attention.



- **Liberal arts colleges**

Liberal arts colleges offer a broad base of courses in the humanities, social, sciences, and sciences. Most are private and focus mainly on undergraduate students. Classes tend to be small and personal attention is available.

- **Universities**

Generally, a university is bigger than a college and offers more majors and research facilities. Class size often reflects institutional size and some classes may taught by graduate students.

- **Community or junior colleges**

Community colleges offer a degree after the completion of two years of full-time study. They frequently offer technical programs that prepare you for immediate entry into the job market.

- **Special interests**

**Single-sex:** All four-year public colleges and most private schools are coed. In terms of single-sex colleges, there are about 50 specifically for men and about 70 specifically for women. Some may enroll a few men or women.

**Religiously-affiliated colleges:** Some private colleges are affiliated with a religious faith. The affiliation may be historic only or it may affect day-to-day student life.

**Historically-black colleges:** Historically-black colleges find their origins in the time when African-American students were systematically denied access to most other colleges and universities. These schools offer students a unique opportunity to experience an educational community in which they're part of the majority.

**Hispanic-serving institutes:** There are about 135 institutions designated by the federal government as "Hispanic serving." At these schools, Hispanic students comprise at least 25 percent of the total full-time undergraduate enrollment.

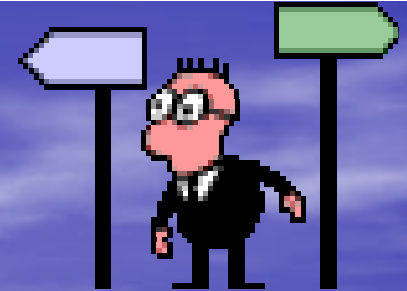


# What Will Colleges Look For?

- ★ Challenging Course selections
- ★ Solid SAT or ACT Scores
- ★ Work Experience
- ★ Community & School Involvement
- ★ Well Written Essays
- ★ Recommendations
- ★ Enrichment Programs
- ★ Leadership!!!



# Narrowing Down Your Options



★ Choose 3-4 colleges that best fit!

★ Go and visit!

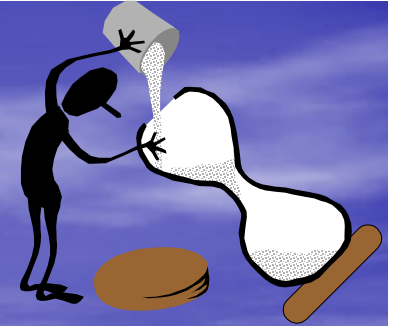
★ Ask lots of questions!

*See Handout*

★ Check out the surroundings!

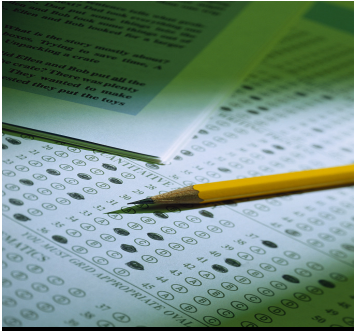
★ Try to sit in on a class!

# Prep for College Calendar Senior Year



By this time you should have:

- ★ Taken the PSAT – Especially Jr. Year
- ★ Taken at least one SAT or ACT
- ★ Explored career possibilities
- ★ Spoken with your counselor to ensure that courses line up with your future plans
- ★ Began your college exploration process
- ★ Attended Educational Enrichment Programs



# SAT vs. ACT

★ The SAT is a reasoning test that measures the students mathematical (quantitative), verbal reasoning, and Writing which develop over time. Scores in each of these areas range from 200-800.

★ The ACT is an achievement test that measures skills in the areas of English, Math, Reading, and Science Reasoning and scores in each of these areas range from 1 to 36. Because the ACT is a different type of test, students may wish to take the ACT in addition to the SAT.

# Confusing Terminology



- ★ EARLY DECISION
- ★ EARLY ACTION
- ★ REGULAR DECISION
- ★ ROLLING ADMISSION
- ★ WAIT LIST



# USA News & World Report's 2008 Best Colleges



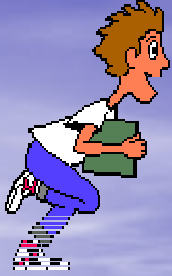
<http://www.usnews.com/sections/rankings>



# What's The Scoop?

This activity is designed to give you first hand experience in navigating through college websites. Please refer to the worksheet.





# Required Paperwork

- ★ Application – most schools request submitting online applications...
- ★ Transcript
- ★ Recommendations
- ★ Resume
- ★ Essays
- ★ Always Make a Copy for Yourself



# ***More Paperwork!***

## **Essays, Resumes, & Recommendations**

- ★ **Essays: The Do's and Don'ts**
- ★ **Resumes: GPA, Test Scores, Activities, Leadership, Honors & Awards, Work Experience, and References**
- ★ **Recommendations: Always Ask, Give Plenty of Time, Give Resume, Always Send a Thank You Card!**

# Top 10 Application Mistakes

**According to the ACT's College Planning website, here are the most common mistakes made by students on college applications:**

- **1. Misspellings and grammatical errors**
- **2. Forgetting to press "submit" when applying online**
- **3. Forgetting signatures**
- **4. Not reading the application carefully**
- **5. Listing extracurricular activities that aren't**
- **6. Not telling your school counselor where you've applied**
- **7. Writing illegibly**
- **8. Using an email address that might be funny to your friends, but not to colleges**
- **9. Not checking your email regularly when you've provided the address to colleges**
- **10. Letting your parents help you fill out your application**

**Full text of this article:**

**<http://www.actstudent.org/college/mistakes.html>**



# *Surf the Net*

## College Searches

<http://www.act.org>

<http://www.number2.com>

<http://www.cfnc.org>

<http://www.collegeboard.com>

<http://www.gocollege.com>

<http://www.kaplan.com>

<http://www.petersons.com>

## Financial Aid & Scholarships

<http://www.fafsa4caster.edu>

<http://www.fasfa.ed.gov>

<http://www.fastweb.com>







# Who Can Find???



1. The number of students at \_\_\_\_\_?



2. The mascot for \_\_\_\_\_?

3. The cost of attendance at \_\_\_\_\_?

4. The affiliation of \_\_\_\_\_?

5. The deadline for admission to \_\_\_\_\_?

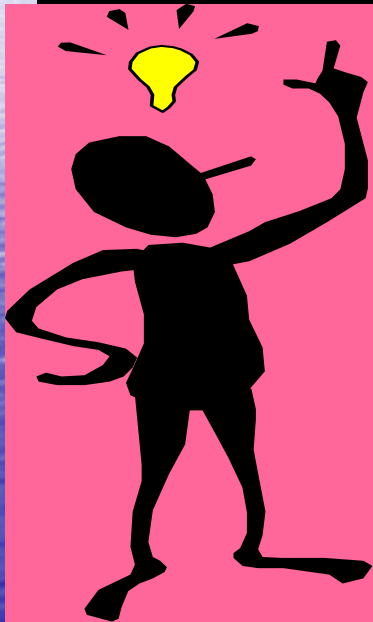
6. What does FAFSA stand for?

7. Where is \_\_\_\_\_ located?



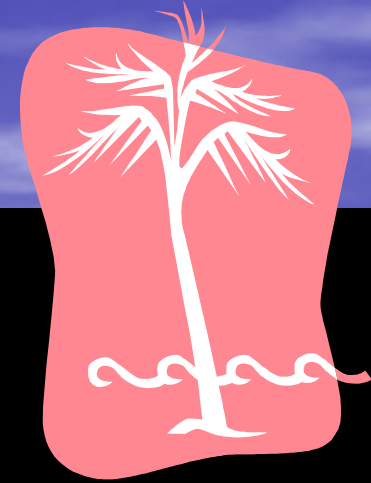
*CHECK IT OUT!*

*THE COLLEGE FOUNDATION  
OF  
NORTH CAROLINA*



CFNC.ORG

# Summary



★ **Know Yourself**

★ **Utilize Your Resources**

★ **Choose 3-4 Colleges – The Best Fit**

★ **Follow Your Time Line**

★ **GOOD LUCK!!!**

# Raychelle Cassada Lohmann, MS, LPC

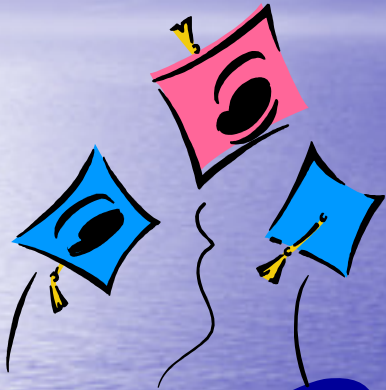


- <http://www.teacherweb.com/SC/MyrtleBeachMiddle/RaychelleLohmann/>





*Thank You For*  
*Coming...*



**the end**

